

BREANMS

A Broadwick Space

About Us

The Beams is a new, expansive venue and event space for London. At over 20,000 square metres, this raw and industrial destination offers several versatile interior and exterior spaces which can be hired exclusively.

The venue is defined by a range of distinct architectural features, including the eponymous roof beams, while original factory-style windows flood the main space with beams of natural light.

The Beams encapsulates a flexible and inspiring environment, providing an unrivalled landscape for filming, photoshoots, cultural events, activations, large-scale set builds, exhibitions, fashion shows and the arts.

Located in the heart of East London's historic Royal Docks and on the River Thames, the venue is easily accessible by the DLR and is only a short distance from London City Airport.



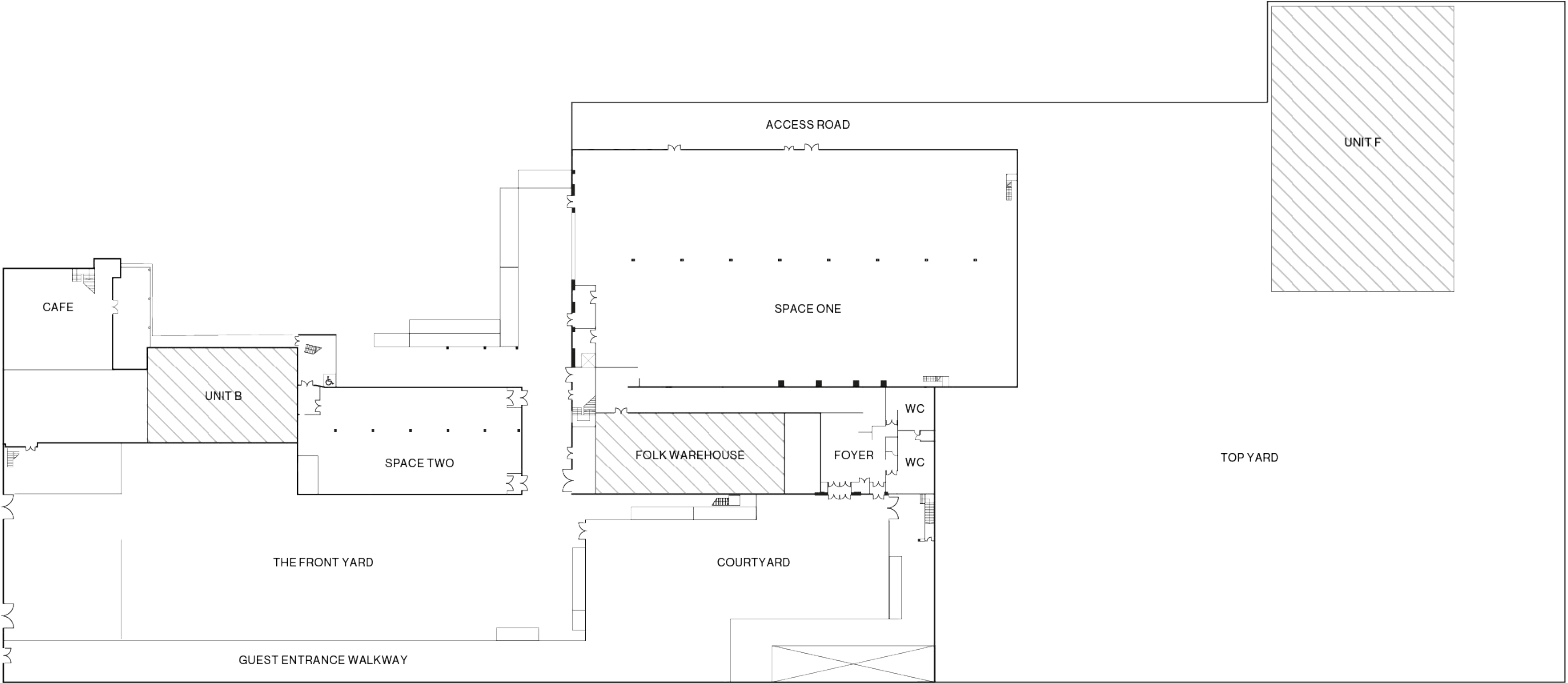
Specifications

SPACES	L (M)	W (M)	H (M)	SQ. M	STANDING	THEATRE	DINNER
Space One	68.4	36.6	6.5	2,468	4,000	2,652	1,810
Space Two	31.1	16.4	4.1	495	800	495	320
Space Three	23.3	12	3 -3.9	327	300	300	140
Space Four	22	16	3.5-5.5	352	320	320	160
Courtyard	49	22	-	1,078	1,000	-	-
Front Yard	53	20	-	1,060	-	-	-
Top Yard	85	60	-	5,100	-	-	-

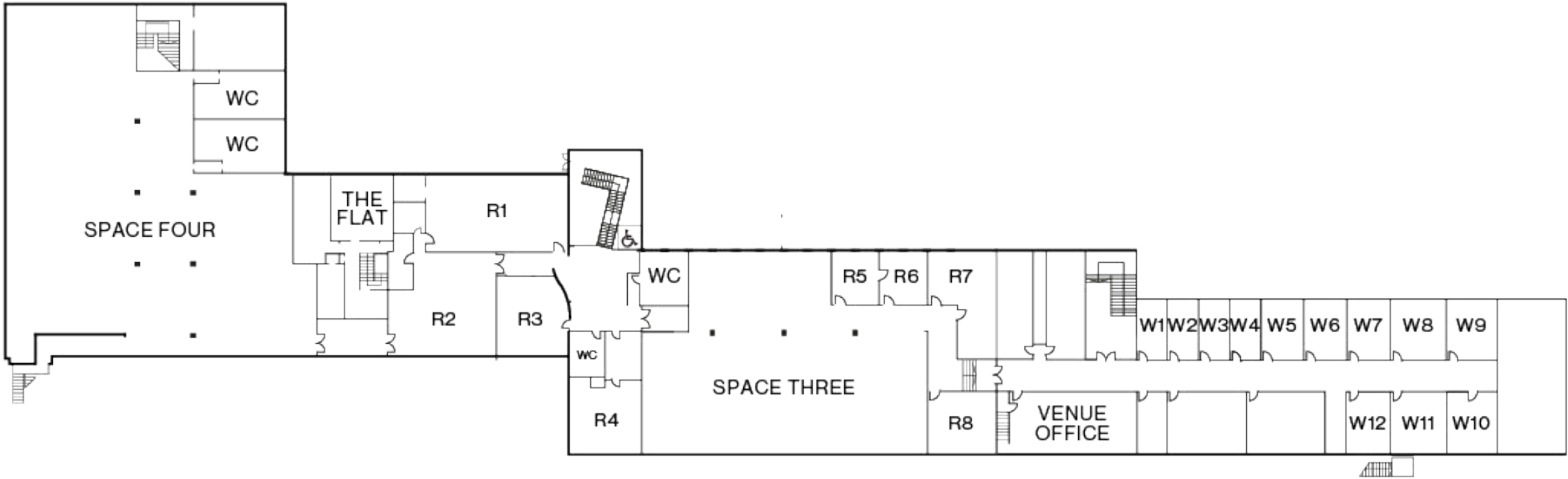
*Individual space capacities are subject to seating, production, event activities and fire exits.

*Green Room facilities and Workspaces are available upon request

The Ground Floor



The First Floor





Our superb
accommodations

Space One

At almost 70 metres long and 35 metres wide, Space One is a spectacular warehouse-style space with an authentic industrial character.

Original features include exposed brick walls, concrete floors and metal pillars, providing an inspiring industrial canvas for photoshoots, filming and events. Alternatively, the space can be fully transformed and is perfect for large set builds, immersive experiences, exhibitions and fashion shows.

AREA:
2,468 sq. m

DIMENSIONS:
L: 68.4m
W: 36.6m
H: 6.5m

CAPACITIES:
Standing: 4,000
Theatre: 2,652
Dinner 1,810

*Capacities may vary subject to seating, production and activities.





Space Two

Space Two retains the raw industrial feel of the building with original red-brick walls, exposed pipework, concrete floors and pillars.

It has been restored with versatility in mind; the letterbox windows have been blacked out to achieve optimal lighting control, providing an ideal secondary space for exhibitions, break-outs and catering.

AREA:
495 sq. m

DIMENSIONS:
L: 31.1m
W: 16.4m
H: 4.1m

CAPACITIES:
Standing: 800
Theatre: 495
Dinner: 320

*Capacities may vary subject to seating, production and activities.





Space Three

Characterised by raw, beautifully textured walls throughout, Space Three provides an elevated industrial backdrop for events and shoots. Benefiting from the building’s characteristic roof light wells, the room has a bright, clean feel, with full-length windows overlooking the landmark Tate & Lyle factory.

Space Three can be used as an extension of the ground floor, providing an impeccable level for VIP and bar areas, or as a production office space. Access is available to a series of smaller rooms.

AREA: 327 sq. m	CAPACITIES: Standing: 300 Theatre: 300 Dinner: 220
DIMENSIONS: L: 23.3m W: 12m H: 3m - 3.9m	*Capacities may vary subject to seating, production and activities.





Space Four

Striking mid-century architecture and décor is a theme in Space Four, which is characterised by high ceilings, vast floors and singular details such as parquet flooring and mosaic columns.

An abundance of natural light creates an inspiring setting for editorial and commercial shoots. Space Four also serves as a unique environment for meetings, receptions and dinners, with access to Rooms 1-4.

AREA:
352 sq. m

DIMENSIONS:
L: 22m
W: 16m
H: 3.5m - 5.5m

CAPACITIES:
Standing: 320
Theatre: 320
Dinner: 160

*Capacities may vary subject to seating, production and activities.





Courtyard, Front Yard and Top Yard

The Courtyard offers nearly over 1,000 square metres of outdoor space, providing the ideal urban backdrop for festival-style events featuring street food vendors.

The Front Yard is conveniently located close to the venue entrance, providing great connectivity to the main building for larger, site-wide productions, markets and summer parties.

The Top Yard is an expansive area adjacent to the main building, suitable for crew parking, unit bases and events that require additional space for outdoor activations.

AREA:
Courtyard:
1,078 sq. m

The Front Yard:
1,060 sq. m

The Top Yard:
5,100 sq. m

*Capacities may vary subject to seating, production and activities.





Partners & Suppliers

Production, Rigging and Power:
Vibration Design and Production
E: niall.spierin@vibration-group.com
M: (0)2085 233 967
T: 07947 898 666

Wi-Fi: Noba
E: nick@noba.com
T: 020 34404 610

Branding: N2 Display
E: mick.woodward@n2display.com
T: 01992 440 333

Catering: KERB
E: toby@kerbevents.com
T: 07475 348772

Moving Venue
E: greatfood@movingvenue.com
T: 020 8038 8783

The Beams has mandatory suppliers for venue security, medic provision, cleaning, waste management, traffic management and stewarding. Please speak with your venue contact to request an indicative quotation in response to your event plans.



Location

Located in the Royal Docks, the Beams is easily accessible by the DLR and is only a short distance from London City Airport.

ADDRESS:
Thameside Industrial Estate
Factory Road
London, E16 2HB
[View directions](#)

TUBE & RAIL:
8 minute walk - London City Airport (DLR)
16 minutes - Canary Wharf
22 minutes - Bank

BUS:
Numbers 330, 473 and 474
all stop near the venue.

AIRPORTS:
City Airport (1.0 mile)
Heathrow Airport (25 miles)
London Stansted Airport (33 miles)
Gatwick Airport (45 miles)

BEAMS