

BREANNS

A Venue from Broadwick Live

About Us

The Beams is a new, expansive venue and event space for London. The incredible 9,500 square metres raw and industrial destination offers several versatile interior and exterior spaces and can be hired exclusively.

The venue evokes an industrial heritage and is defined by a range of beautiful architectural features, offering a series of large, clean and functional spaces.

The Beams encapsulates a flexible and inspiring environment, providing an unrivalled landscape for filming, photo shoots, music, cultural events, brand events, large scale set builds, exhibitions, fashion shows and the arts.

Located in the heart of East London's historic Royal Docks and on the River Thames, the venue is easily accessible by the DLR and is only a short distance from London City Airport.



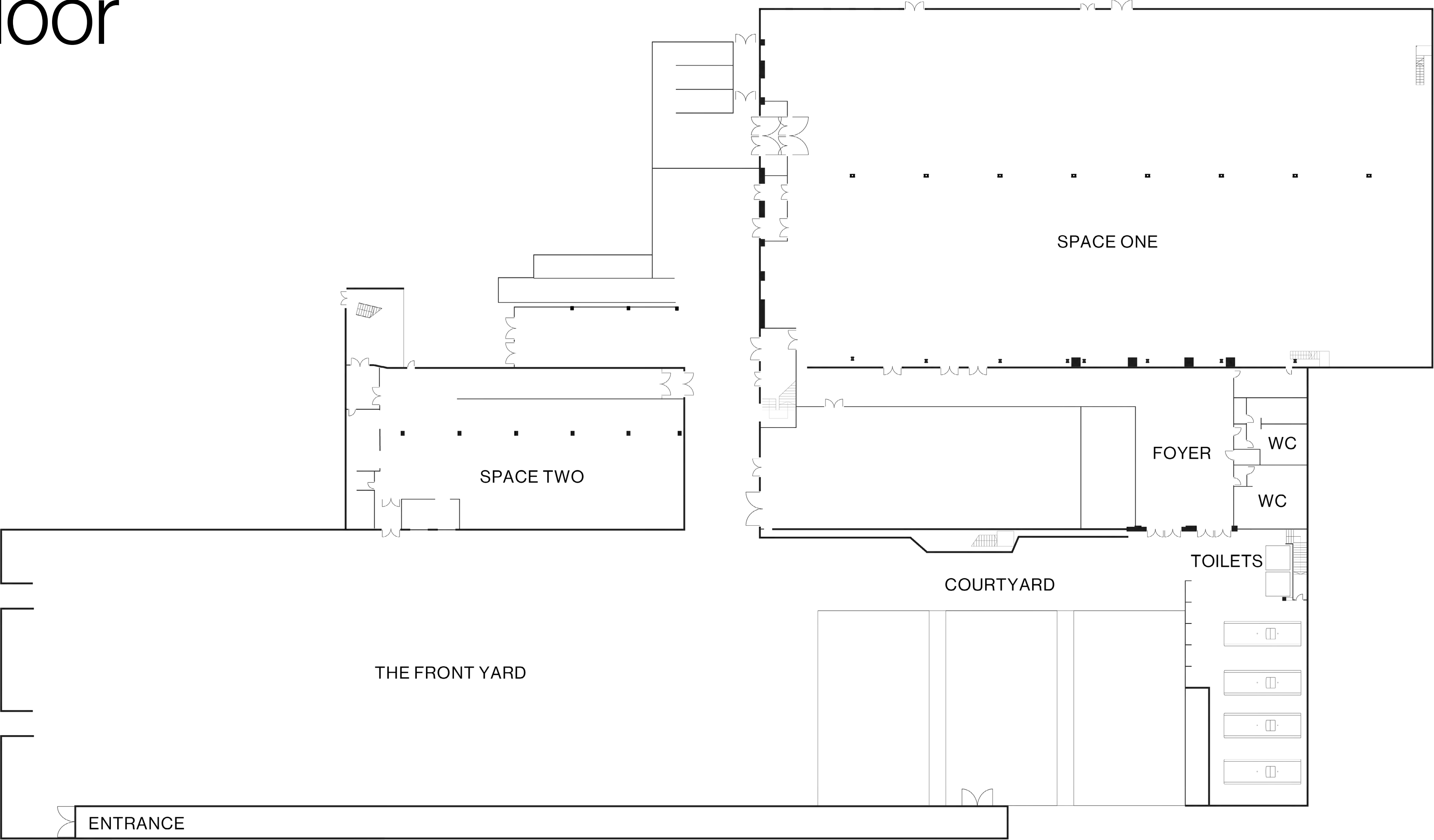
Specifications

SPACES	L (M)	W (M)	H (M)	SQ. M	STANDING	THEATRE	DINNER	CABARET
Space One	68.4	36.6	6.5	2,468	4,000	2,652	1,810	1,086
Space Two	31.1	16.4	4.1	495	800	495	320	192
Space Three	23.3	12	3 -3.9	327	300	300	220	132
Courtyard	-	-	-	893	1,000	-	-	-
The Front Yard	-	-	-	5,326	-	-	-	-
Studio Space One	-	-	-	40	-	-	-	-
Studio Space Two	-	-	-	30	-	-	-	-

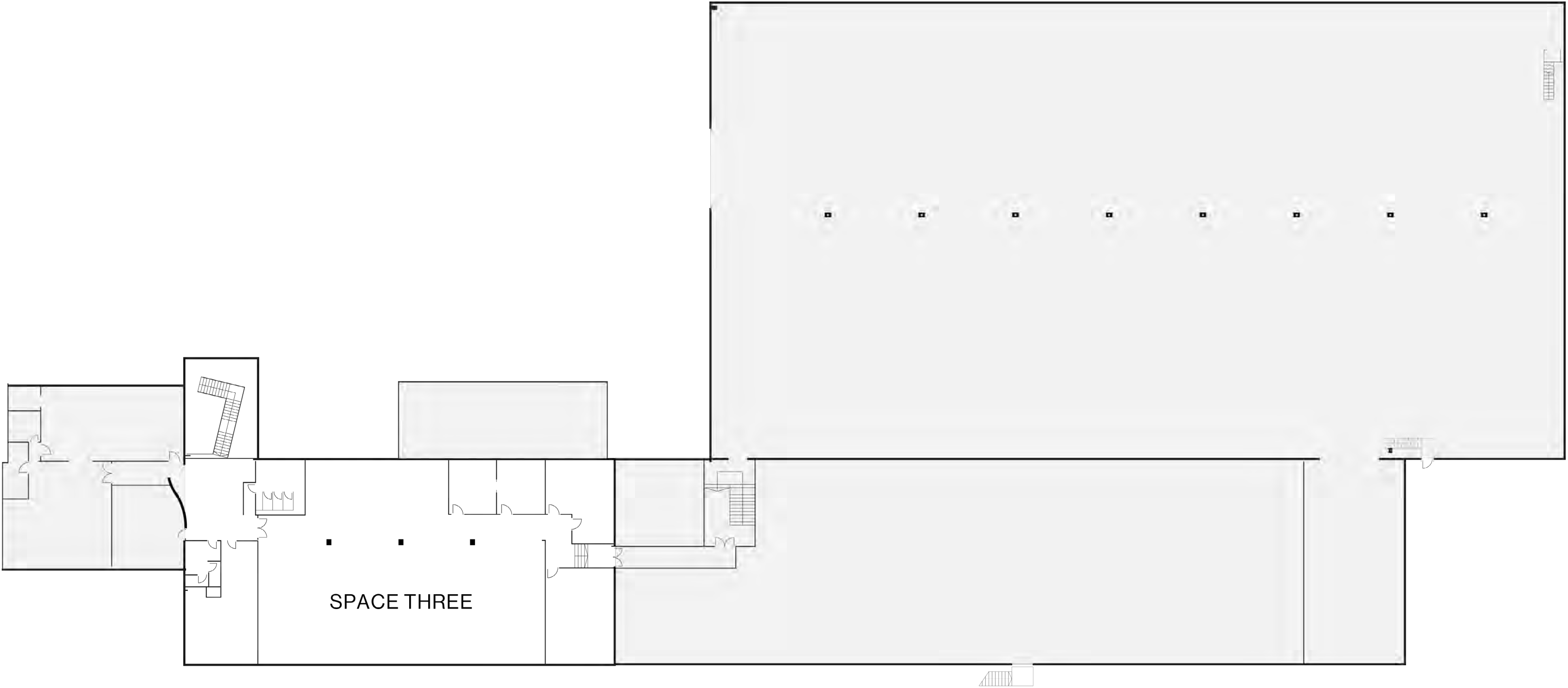
*Individual space capacities are subject to seating, production, event activities and fire exits.

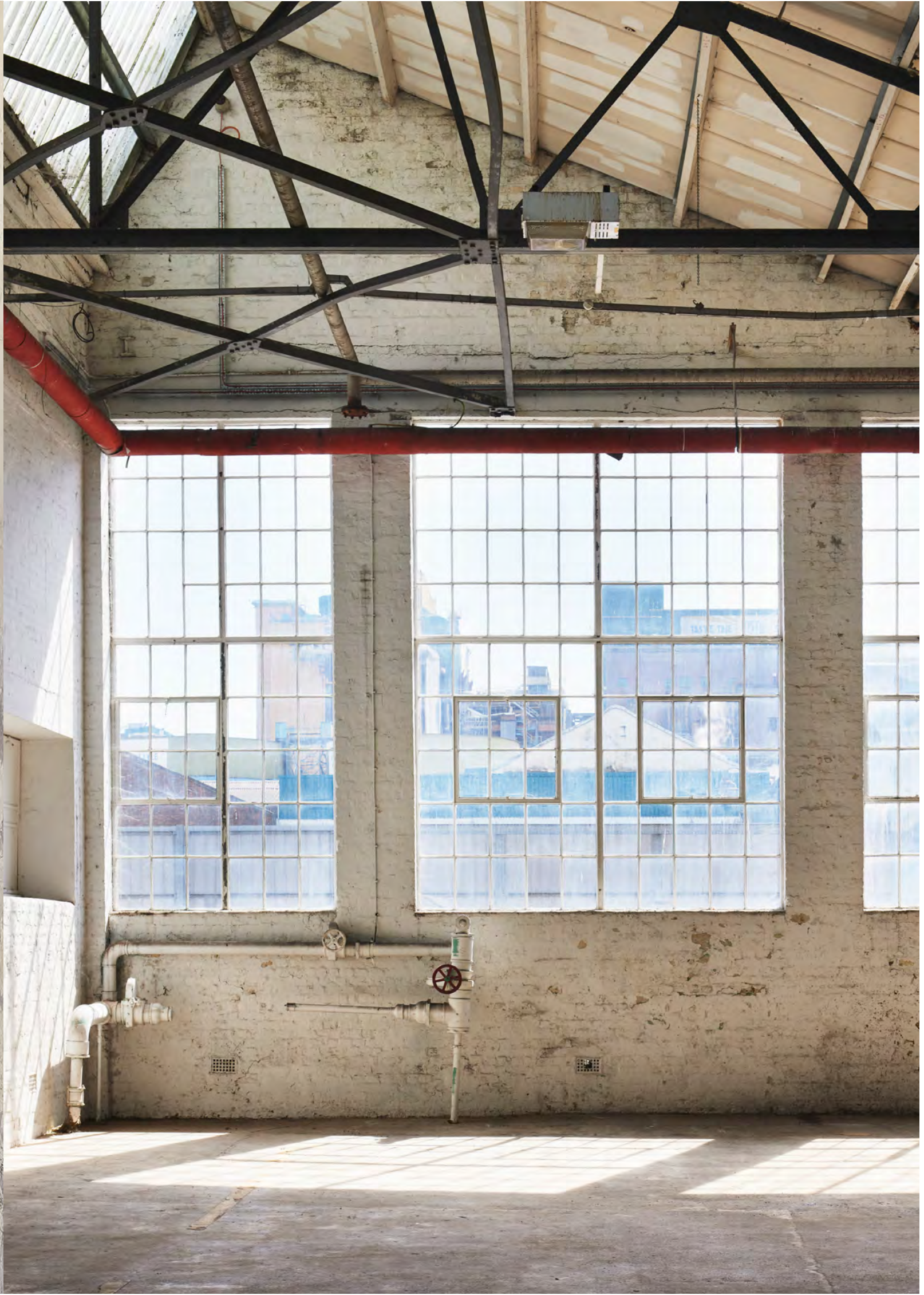
*Green Room facilities are available on request

The Ground Floor



The First Floor





Our superb
accommodations

Space One

At almost 70 metres long and 35 metres wide, Space One is a spectacular warehouse-style space with an authentic industrial character.

Original features include exposed brick walls, concrete floors and metal pillars, providing an inspiring industrial canvas for photoshoots, filming and events. Alternatively, the space can be fully transformed and is perfect for large set builds, immersive experiences, exhibitions and music.

AREA:
2,468 sq. m

DIMENSIONS:
L: 68.4m
W: 36.6m
H: 6.5m

CAPACITIES:
Standing: 4,000
Theatre: 2,652
Dinner 1,810
Cabaret: 1,086

*Capacities may vary subject to seating, production and activities.





Space Two

Space Two retains the raw industrial feel of the building with original red-brick walls, exposed pipework, concrete floors and pillars.

It has been restored with versatility in mind; the letterbox windows have been blacked out to achieve optimal lighting control, providing an ideal secondary space for exhibitions, break-outs and catering.

AREA:
495 sq.m

DIMENSIONS:
L: 31.1m
W: 16.4m
H: 4.1m

CAPACITIES:
Standing: 800
Theatre: 495
Dinner: 320
Cabaret: 192

*Capacities may vary subject to seating, production and activities.





Space Three

Characterised by raw, beautifully textured walls throughout, Space Three provides an elevated industrial backdrop for events and shoots. Benefiting from the building’s characteristic roof light wells, the room has a bright, clean feel, with full-length windows overlooking the landmark Tate and Lyle Factory.

Space 3 can be used as an extension of the ground floor spaces, providing an impeccable level for VIP and bar areas, production offices and studios or green rooms.

AREA: 327sq. m	CAPACITIES: Standing: 300 Theatre: 300 Dinner: 220 Cabaret: 132
DIMENSIONS: L: 23.3m W: 12m H: 3m - 3.9m	

*Capacities may vary subject to seating, production and activities.





Courtyard and The Front Yard

The Courtyard offers nearly 900 square metres of outdoor space, providing the ideal urban backdrop for festival style events featuring street food vendors.

The venue’s exceptionally large outdoor space is secure and gated, with easy access from the interior rooms. This fully flexible, open-air space is perfect for summer parties, festivals, markets and outdoor activations.

The Front Yard is suitable for large-scale unit bases and conveniently located close to the venue entrance, providing great connectivity to the main building for larger, site-wide productions.

AREA:
Courtyard:
893 sq. m

CAPACITIES:
Courtyard:
Standing: 1,000

THE FRONT
YARD:
5,326 sq. m

*Capacities may
vary subject to
seating, production
and activities.



Location

Located in the Royal Docks, The Beams is easily accessible by the DLR and is only a short distance from London City Airport.

ADDRESS:

Thameside Industrial Estate
Factory Road
London, E16 2HB

[View directions](#)

TUBE & RAIL:

8 minute walk - Pontoon Dock(DLR)
8 minute walk - London City Airport (DLR)
16 minutes - Canary Wharf
22 minutes - Bank

BUS:

Numbers 330, 473 and 474
all stop near the venue

AIRPORTS:

City Airport (1.0 mile)
Heathrow Airport (25 miles)
London Stansted Aiport (33 miles)
Gatwick Aiport (45 miles)

BEAMS